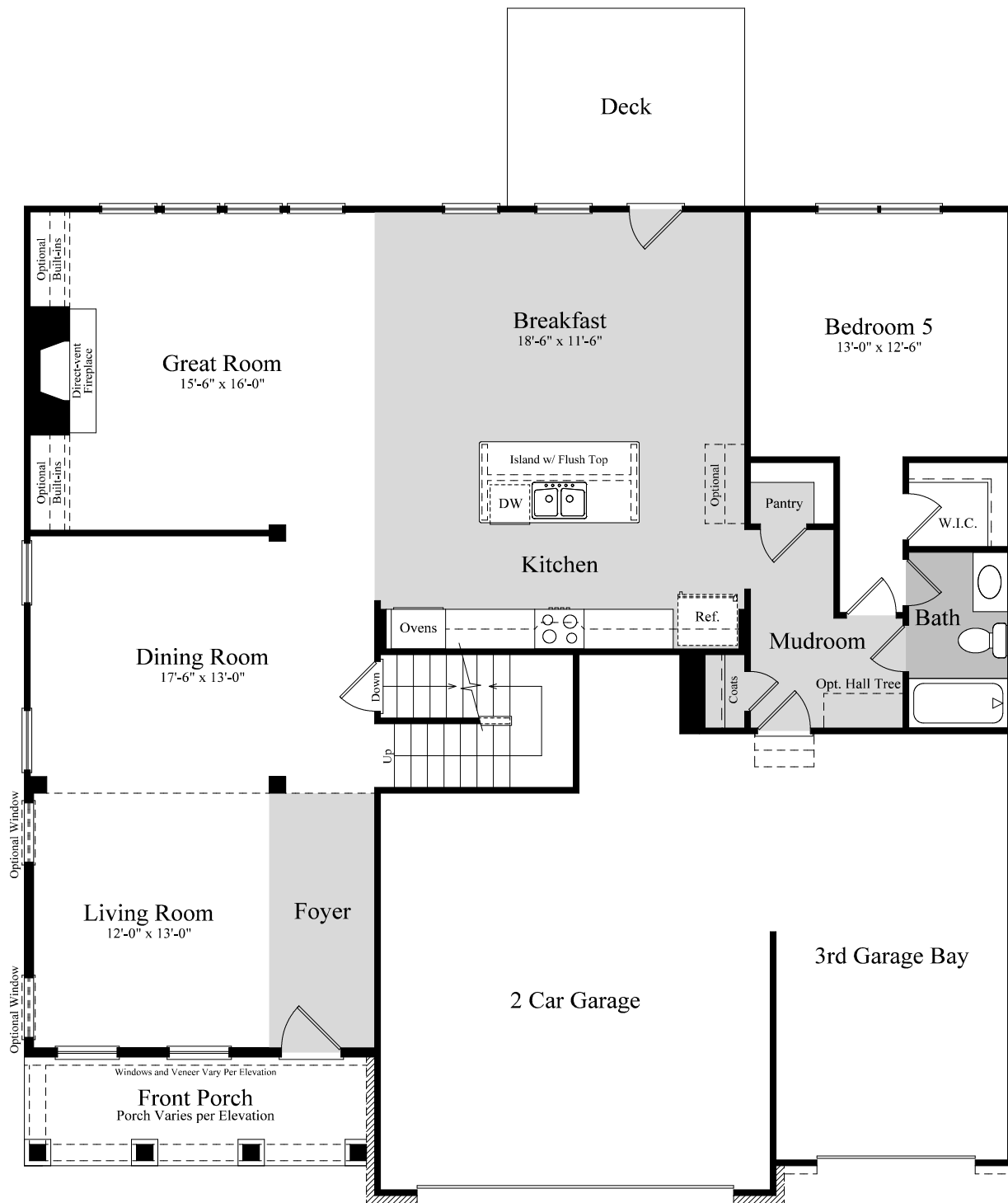


The Winslow



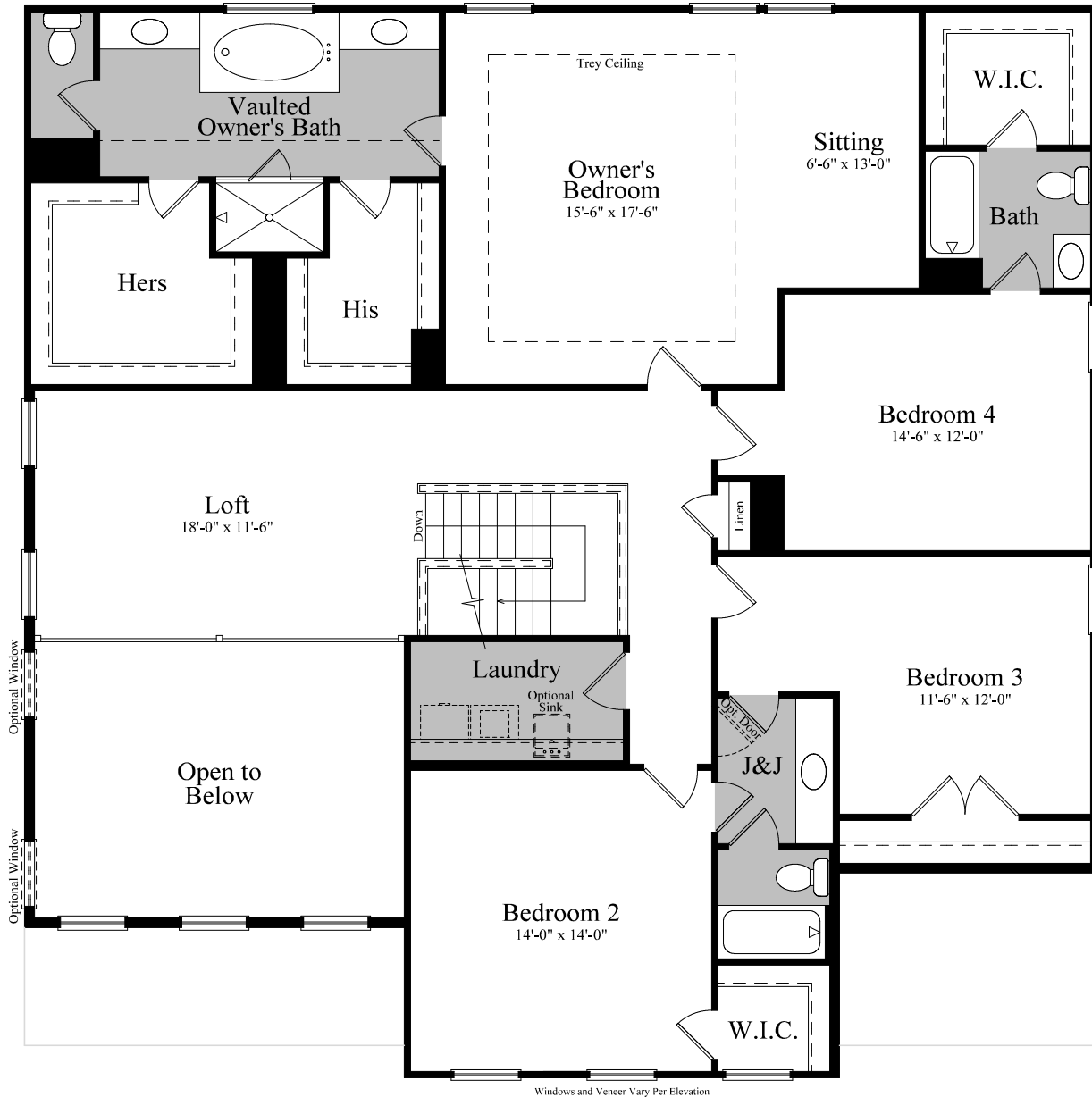
Elevation A

Sharp Residential reserves the right to change floor plans, specifications, materials, and prices without notice or obligation. All floor plans are artist interpretations and are not intended to be exact depictions. Room dimensions are approximate and may vary per elevation. Furniture layouts are for representation only. Confer with Sales Counselor(s) and refer to the Premium Features Sheet for additional floor plan and/or elevation upgrades that may be available. 1/2/18



The Winslow First Floor

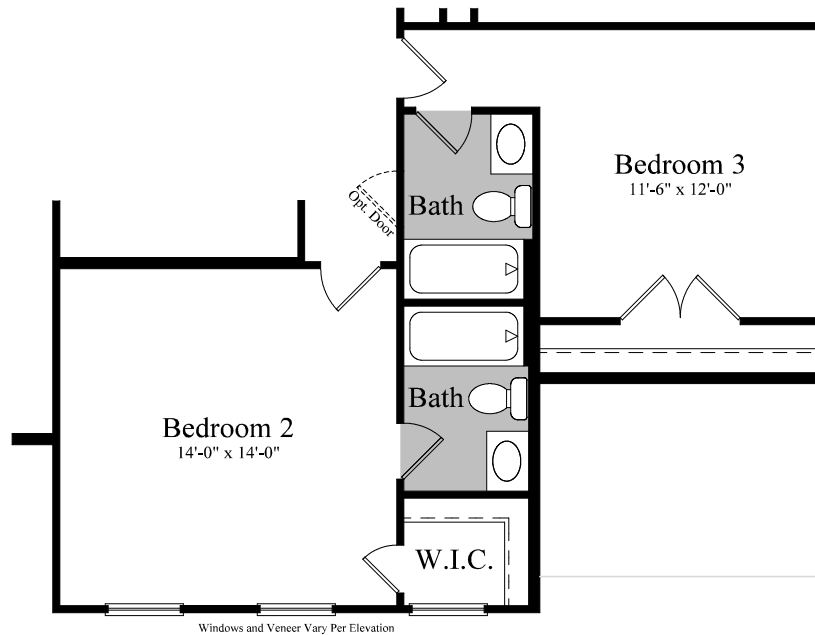
Sharp Residential reserves the right to change floor plans, specifications, materials, and prices without notice or obligation. All floor plans are artist interpretations and are not intended to be exact depictions. Room dimensions are approximate and may vary per elevation. Furniture layouts are for representation only. Confer with Sales Counselor(s) and refer to the Premium Features Sheet for additional floor plan and/or elevation upgrades that may be available. 12/16/16



The Winslow Second Floor

Sharp Residential reserves the right to change floor plans, specifications, materials, and prices without notice or obligation. All floor plans are artist interpretations and are not intended to be exact depictions. Room dimensions are approximate and may vary per elevation. Furniture layouts are for representation only. Confer with Sales Counselor(s) and refer to the Premium Features Sheet for additional floor plan and/or elevation upgrades that may be available. 1/3/18

The Winslow



Optional Private Baths 2 and 3

Sharp Residential reserves the right to change floor plans, specifications, materials, and prices without notice or obligation. All floor plans are artist interpretations and are not intended to be exact depictions. Room dimensions are approximate and may vary per elevation. Furniture layouts are for representation only. Confer with Sales Counselor(s) and refer to the Premium Features Sheet for additional floor plan and/or elevation upgrades that may be available. 1/2/18